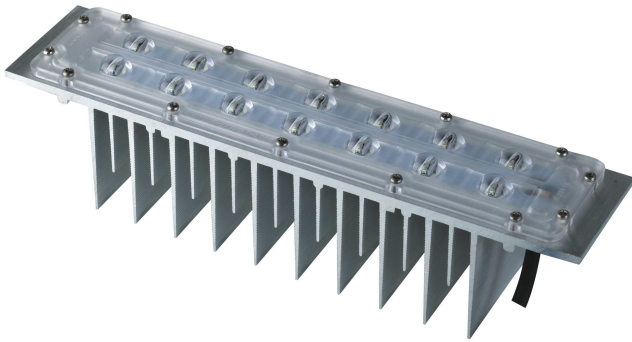


LED Light module

● 规格 Specification



型号/Model	XLD-MU-002-XX030
功率/Power	30W
工作电流 Working current	700mA
工作电压 Working voltage	DC39-44V
防护等级 IP rating	IP66
产品尺寸 Product size	270*59*69mm
产品重量 Product weight	0.53kg

*Standard color temperature 4300K, Ra≥70

*Above parameters for reference only, tolerance exist for partial parameters

● 产品特点 Product Features

采用CREE XPG2 LED为标配光源。
Adopt CREE XPG2 lamp.

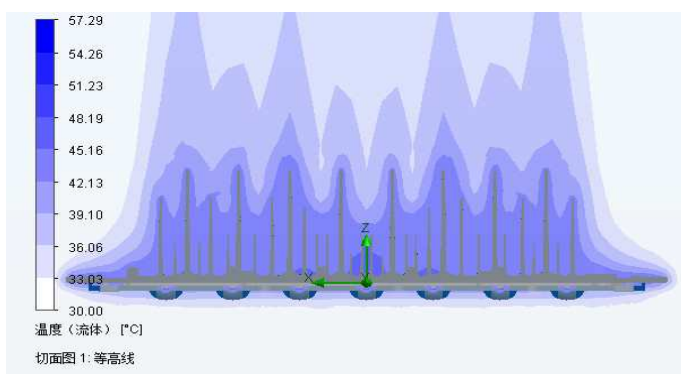
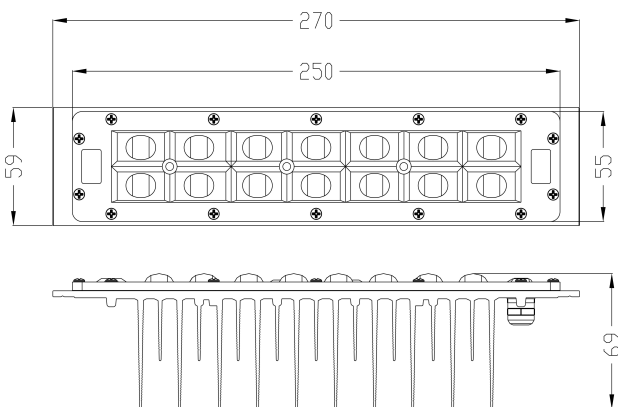
采用光学级聚碳酸酯材料制作二次光学元器件。
Secondary optical components in Optic-class polycarbonate.

采用铝挤出工艺定制高密度\高导热铝材为散热器基体。
Heatsink in hi-density extrusion aluminum alloy featuring high heat conductivity.

出色的热辐射性能,在30°C的环境下散热结构热阻小于1.3°C/W。
Excellent heat radiation performance, heat resistance less than 1.3°C/W at 30°C ambience.

符合ME3/ME4 道路照明条件需求。
Conform to ME3/ME4 requirement.

● 产品尺寸 Dimensions(mm)



● 配光曲线图 Photometric data

